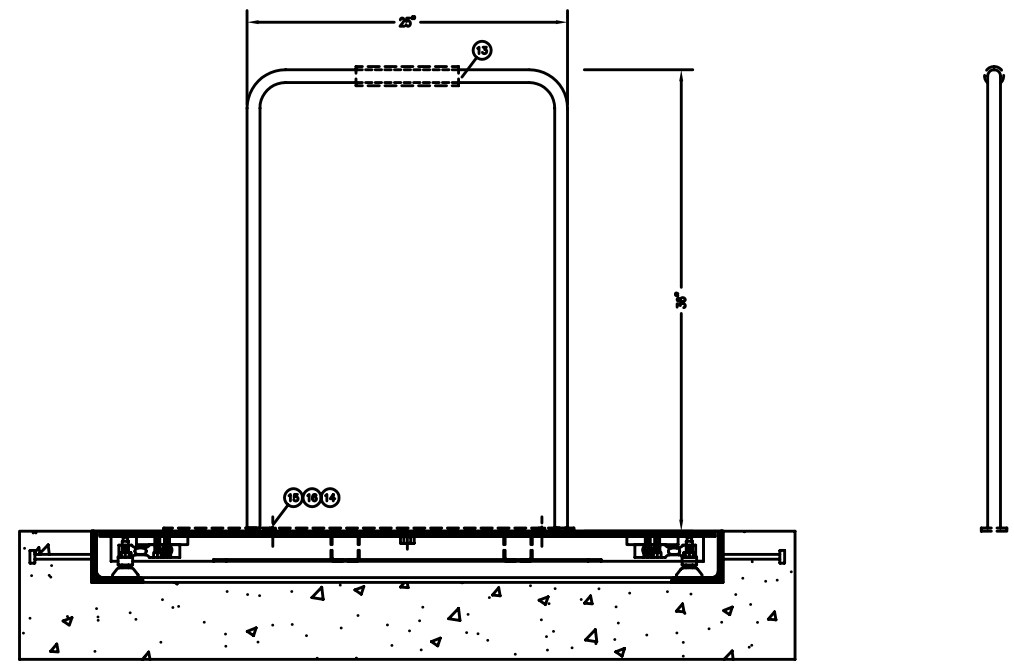
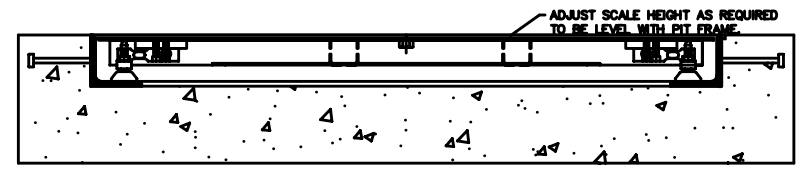
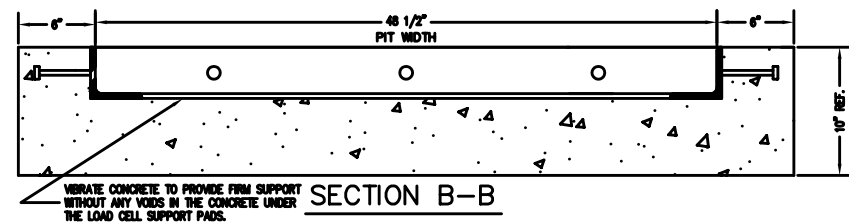
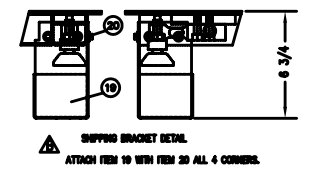
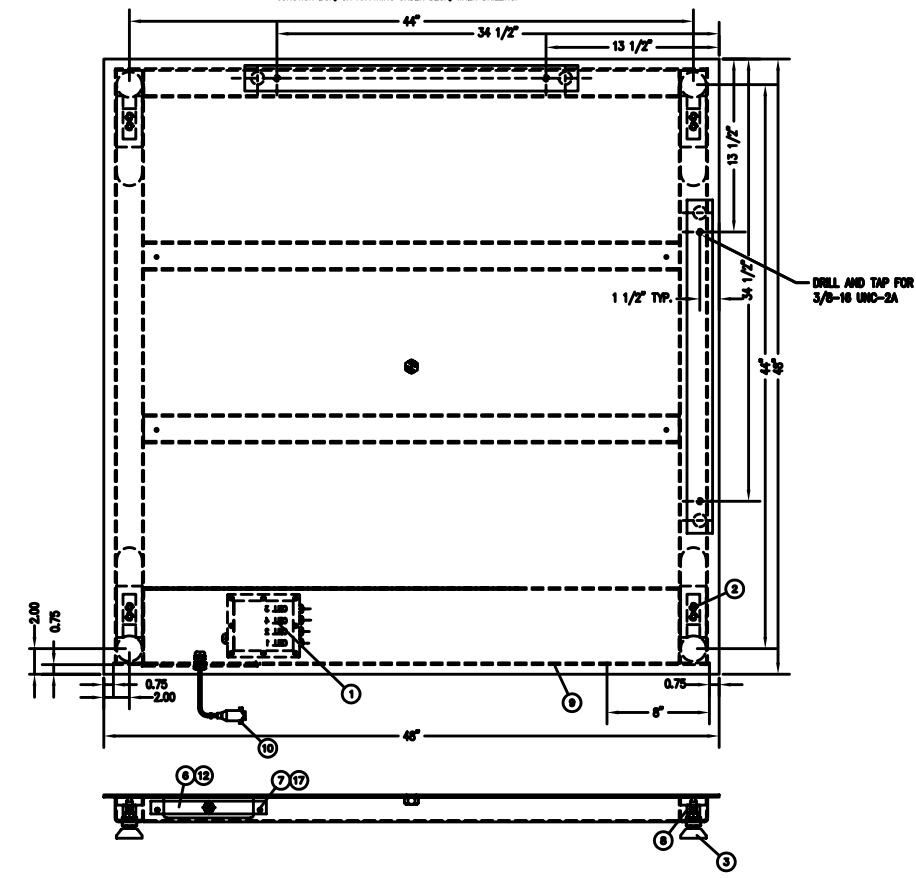
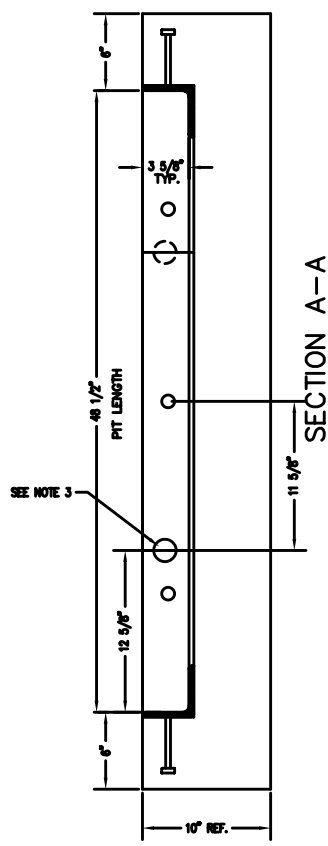
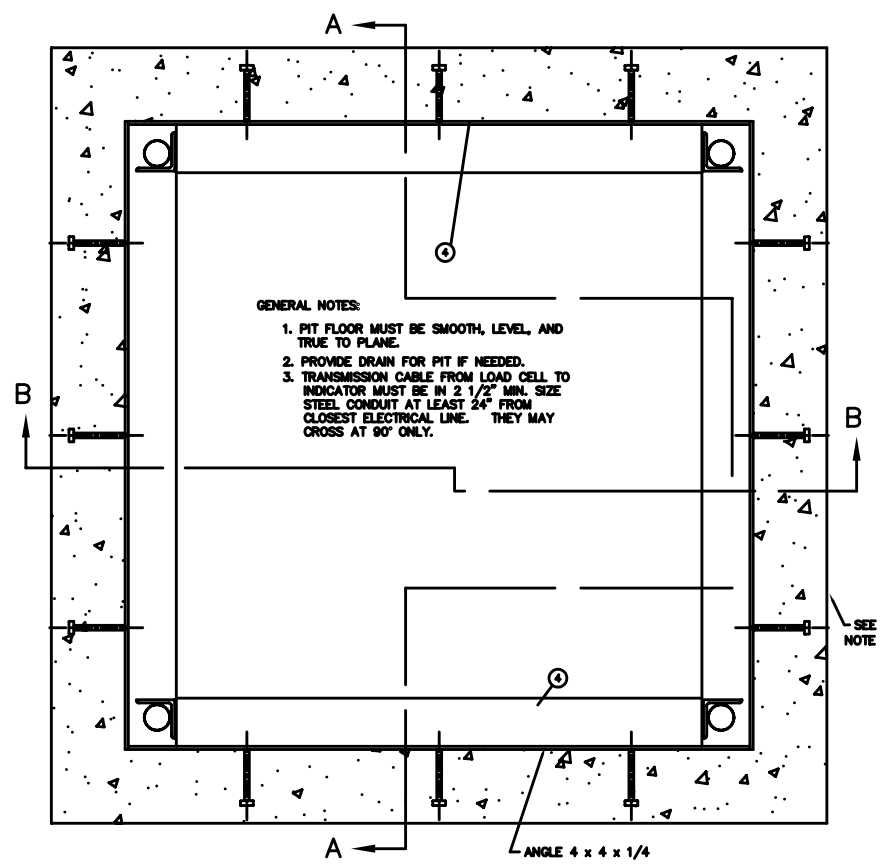


REVISION RECORD			
LTR	DESCRIPTION	DATE	BY
A	RELEASED FOR PRODUCTION TYPED ITEM 4 WAS 1834-0103-0A TYPED 48 1/2" WAS 72" POT LENGTH 6/25/10	8/24/10	25080 GFL
B	ADDED ITEMS 18,20 AND DETAIL	7/10/12	25715 GFL

- NOTES:
- FOR BEST PERFORMANCE, SCALE SHOULD BE INSTALLED ON A SMOOTH AND LEVEL SURFACE.
  - REMOVE ITEMS 6 AND 7 FOR ACCESS TO JUNCTION BOX.
  - REFERENCE DWG. 1913-0050-0A FOR LOCATION OF SERIAL TAG AND LOG.
  - REFERENCE DWG. 1932-0024-P2 FOR LOAD CELL INSTALLATION AND TORQUE SPECIFICATION.
  - HARD RAIL CAN BE INSTALLED IN EITHER DIRECTION TO BE DRILLED AND TAPPED AT TIME OF INSTALLATION.
  - CUTION TO BE TAKEN NOT TO DAMAGE LOAD CELL, LOAD CELL CABLE, JUNCTION BOX, OR ANYTHING UNDER DECK, WHEN DRILLING.



QTY.	QTY.	QTY.	ITEM	PART/DWG. NUMBER	DESCRIPTION	MATERIAL OR SOURCE	WT. EACH
16	16	20	6021-0014	SCW HX WASHER HD	1/4-20 x 5/8 TYPE F Z/P		
4	4	19	1913-C150-08	SHIPPING BRKT.			
1	1	18	418R1047	EYE BOLT	5/8-11		
2	2	17	6024-1027	WASHER FLAT	#10		
2	16	6024-0019	WASHER FLAT	3/8" S.S.			
2	15	6024-0046	WASHER LOCK	3/8" S.S.			
2	14	6007-0041	BOLT HEX HD	3/8-16 x 1" S.S.			
1	13	1934-B110-0A	HANDRAIL ASSY				
1	1	12	6610-1150	GLAND CONNECTOR			
4	4	11	6540-1062	HOLE PLUG	1 1/4" DIA.		0.05
1	1	10	3502-B398-0A	LOAD CELL CABLE			
1	1	9	1913-D128-0A	WEIGHBRIDGE	48" x 48"		179.0
4	4	8	LFB-500HMT	LOAD CELL			1.5
2	2	7	6021-0988	SCW HEX HEAD	#10-32 x 1/2"		0.05
1	1	6	1913-B032-08	J-BOX BRACKET			.18
1	1	5	1913-B050-0A	I.D. MARKING			0.1
1	1	4	1934-C101-0A	PIT STEEL ASSY.			142.5
4	4	3	1930-B363-0A	F.H. FOOT ASSY.	2" DIA.		0.9
8	8	2	6021-2064	S.H. CAP SCREW	3/8-24 UNF-2A x 1 1/4"		0.5
1	1	1	3502-C208-0A	JUNCTION BOX			2.0

QTY.	QTY.	QTY.	ITEM	PART/DWG. NUMBER	DESCRIPTION	MATERIAL OR SOURCE	WT. EACH
470.0	470.0	WT.			PARTS/MATERIAL LIST		

UNLESS OTHERWISE SPECIFIED TOLERANCE ON DIMENSIONS ARE:

ANGLES	± 1/2"
INTEGERS/FRACTIONS	± 1/16 IN.
DECIMALS (.1)	± .03 IN.
DECIMALS (.00)	± .01 IN.
DECIMALS (.000)	± .005 IN.

NOTE: WHOLE NUMBERS MUST BE WRITTEN X1000 TO INVOKE DECIMAL TOLERANCES.

THIS DRAWING IS THE PROPERTY OF THE CARDINAL SCALE MFG. CO. AND SHALL NOT BE USED NOR REPRODUCED EITHER WHOLLY OR IN PART EXCEPT WITH WRITTEN AUTHORIZATION. ALL RIGHTS OF DESIGN OR INVENTION ARE RESERVED.

**Cardinal**  
Cardinal Scale Manufacturing Co.

CARDINAL DETECTOR FULLER WEIGHING SYSTEMS

TITLE: FINAL ASSY. FH-144-II/C, FH-144-II/CH

SCALE	NTS	NO NOT SCALE DRAWING	NEXT ASSEMBLY
DR.	GFL	DATE	6/24/10
CH.		DATE	
MODEL	FH-144-II/C	SHEET	1 OF 1
	FH-144-II/CH	DWG. NO.	1913-D131-0A
		REV.	B