

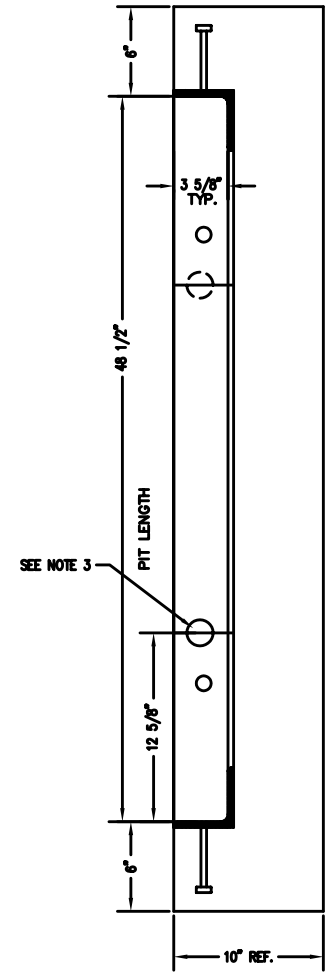
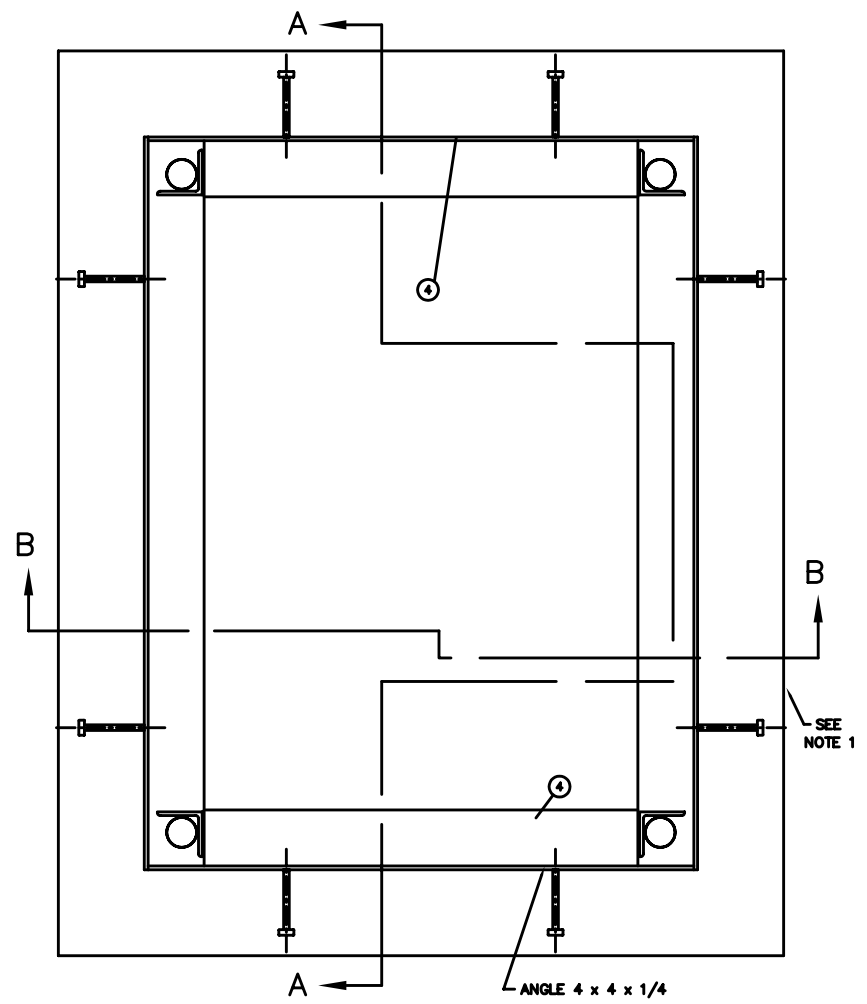
REVISION RECORD			
LTR	DESCRIPTION	DATE	BY
A	RELEASED FOR PRODUCTION	10/5/10	25194 JPL
B	ADDED ITEMS 19,20 AND DETAIL	7/10/12	25715 JPL

GENERAL NOTES:

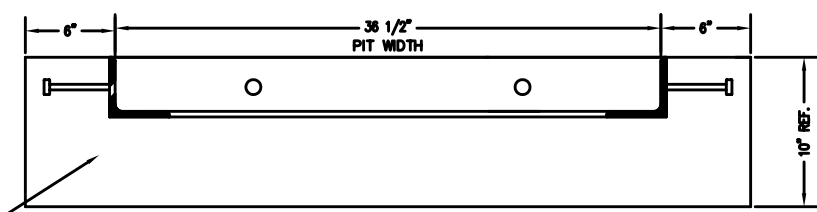
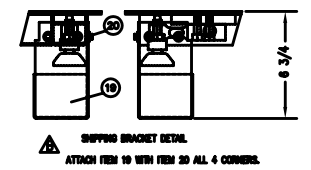
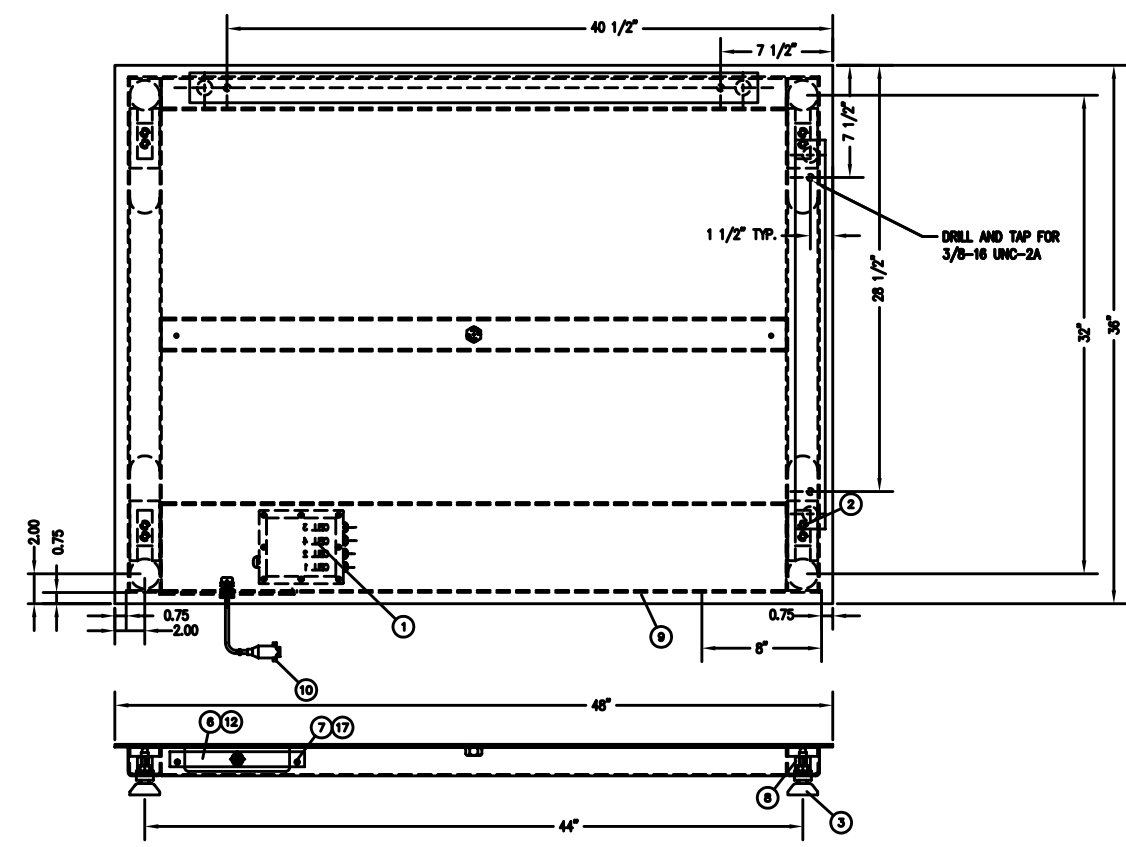
- PIT FLOOR MUST BE SMOOTH, LEVEL, AND TRUE TO PLANE.
- PROVIDE DRAIN FOR PIT IF NEEDED.
- TRANSMISSION CABLE FROM LOAD CELL TO INDICATOR MUST BE IN 2 1/2" MIN. SIZE STEEL CONDUIT AT LEAST 24" FROM CLOSEST ELECTRICAL LINE. THEY MAY CROSS AT 90° ONLY.

NOTES:

- FOR BEST PERFORMANCE, SCALE SHOULD BE INSTALLED ON A SMOOTH AND LEVEL SURFACE.
- REMOVE ITEMS 6 AND 7 FOR ACCESS TO JUNCTION BOX.
- REFERENCE DWG. 1913-B050-0A FOR LOCATION OF SERIAL TAG AND LOGO.
- REFERENCE DWG. 1934-A034-PS FOR LOAD CELL INSTALLATION AND TORQUE SPECIFICATION.
- HAND RAIL CAN BE INSTALLED IN EITHER DIRECTION. TO BE DRILLED AND TAPPED AT TIME OF INSTALLATION.
- CAUTION TO BE TAKEN NOT TO DAMAGE LOAD CELL, LOAD CELL CABLE, JUNCTION BOX, OR ANYTHING UNDER DECK, WHEN DRILLING.

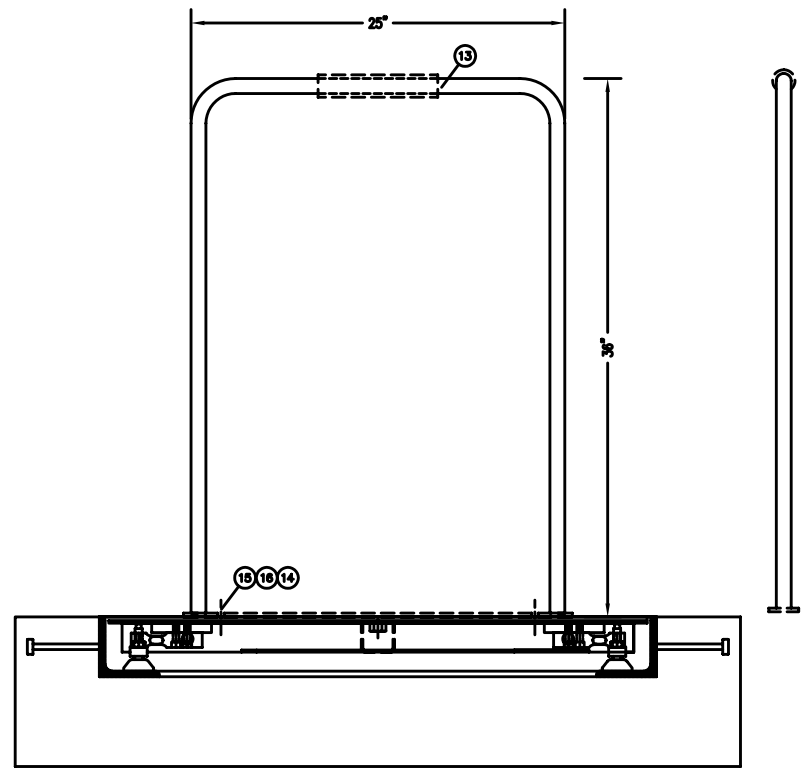
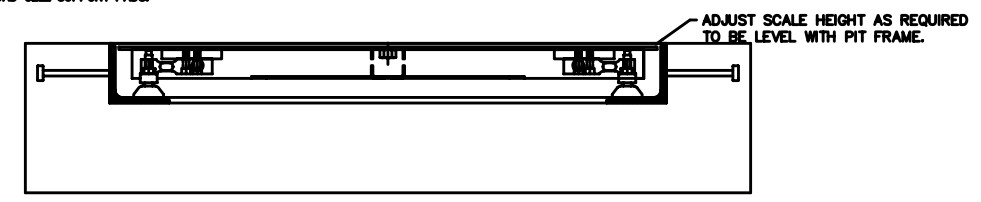


SECTION A-A



SECTION B-B

VERBATE CONCRETE TO PROVIDE FIRM SUPPORT WITHOUT ANY VOIDS IN THE CONCRETE UNDER THE LOAD CELL SUPPORT PADS.



QTY.	QTY.	QTY.	ITEM	PART/DWG. NUMBER	DESCRIPTION	MATERIAL OR SOURCE	WT. EACH
16	16	20	6021-0014	SCW HX WASHER HD	1/4-20 x 5/8 TYPE F Z/P		
4	4	19	1913-C150-08	SHIPPING BRKT.			
1	1	18	418R1047	EYE BOLT	5/8-11		
2	2	17	6024-1027	WASHER FLAT	#10		
2	16	6024-0019	WASHER FLAT	3/8" S.S.			
2	15	6024-0046	WASHER LOCK	3/8" S.S.			
2	14	6007-0041	BOLT HEX HD	3/8-16 x 1" S.S.			
1	13	1934-B110-0A	HANDRAIL ASSY				
1	1	12	6610-1150	GLAND CONNECTOR			
4	4	11	6540-1062	HOLE PLUG	1 1/4" DIA.		0.05
1	1	10	3502-B396-0A	LOAD CELL CABLE			
1	1	9	1913-D142-0A	WEIGHBRIDGE	48" x 36"		142.0
4	4	8	LFB-500HMT	LOAD CELL			1.5
2	2	7	6021-0988	SCW HEX HEAD	#10-32 x 1/2"		0.05
1	1	6	1913-B032-08	J-BOX BRACKET			.18
1	1	5	1913-B050-0A	LD. MARKING			.01
1	1	4	1934-C099-0A	PIT STEEL ASSY.			101.7
4	4	3	1930-B363-0A	F.H. FOOT ASSY.	2" DIA.		0.9
8	8	2	6021-2064	S.H. CAP SCREW	3/8-24 UNF-2A x 1 1/4"		0.5
1	1	1	3502-C208-0A	JUNCTION BOX			2.0

QTY.	QTY.	QTY.	ITEM	PART/DWG. NUMBER	DESCRIPTION	MATERIAL OR SOURCE	WT. EACH
280	280	WT.			PARTS/MATERIAL LIST		
-1A	-0A	ASSY					

UNLESS OTHERWISE SPECIFIED TOLERANCE ON DIMENSIONS ARE:
 ANGLES ± 1/2°
 INTEGERS/FRACTIONS ± 1/16 IN.
 DECIMALS (.4) ± .03 IN.
 DECIMALS (.30) ± .01 IN.
 DECIMALS (.000) ± .005 IN.
 NOTE: WHOLE NUMBERS MUST BE WRITTEN X1000 TO INVOLVE DECIMAL TOLERANCES.

THIS DRAWING IS THE PROPERTY OF THE CARDINAL SCALE MFG. CO. AND SHALL NOT BE USED NOR REPRODUCED EITHER WHOLLY OR IN PART EXCEPT WITH WRITTEN AUTHORIZATION. ALL RIGHTS OF DESIGN OR INVENTION ARE RESERVED.

Cardinal
Cardinal Scale Manufacturing Co.
CARDINAL DETECTO FULLER WEIGHING SYSTEMS

TITLE: FINAL ASSY. FH-143-II/C, FH-143-II/CH
 SCALE: NTS NO. 10/5/10
 DR. GFL DATE 10/5/10
 CH. DATE
 MODEL: FH-143-II/C SHEET 1 OF 1
 DWG. NO. 1913-D141-0A
 REV. B